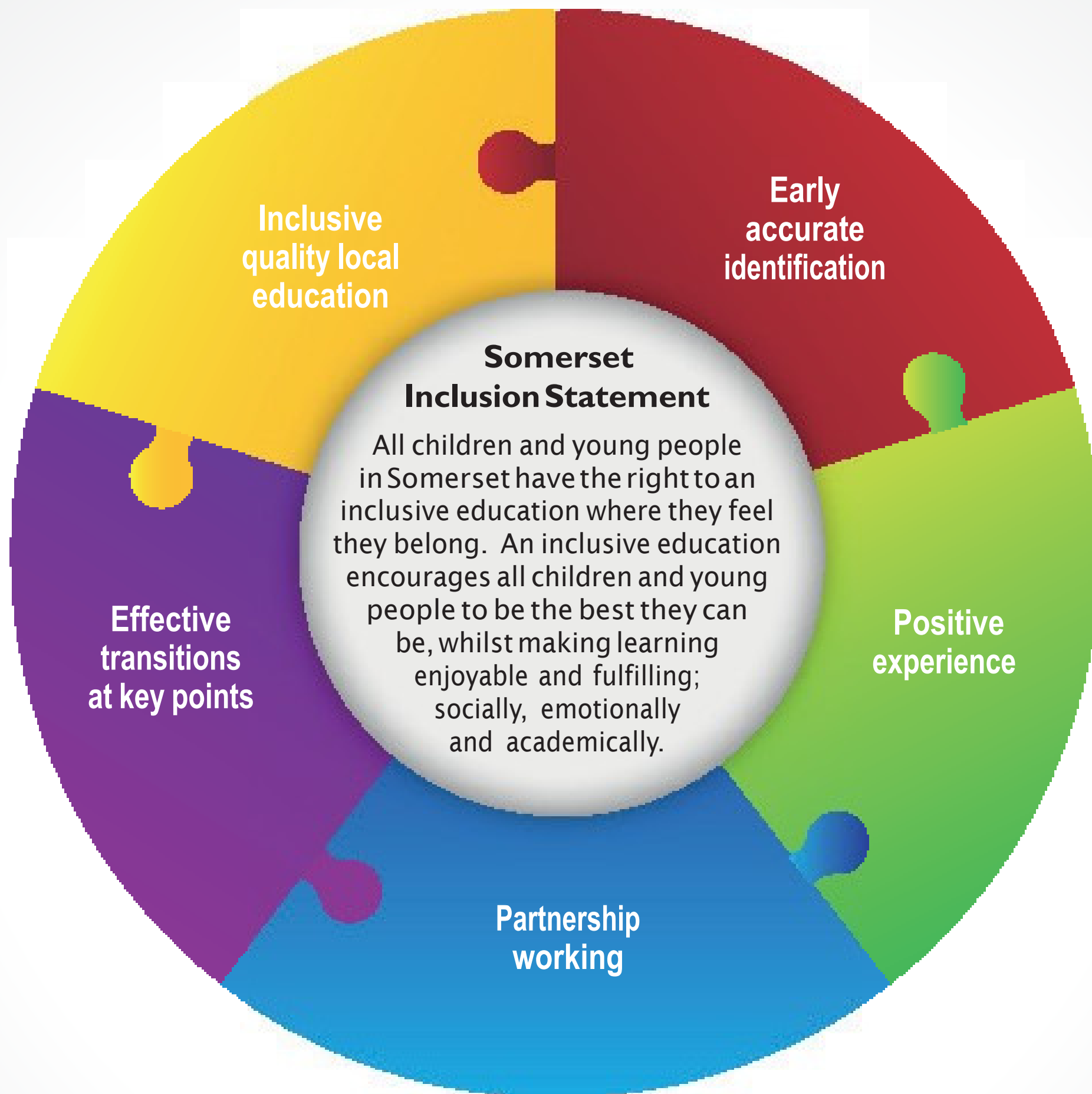


# Somerset

## Core Standards for SEND

These education standards describe what all Somerset schools, settings and colleges can do for children and young people with special educational needs and/or disability (SEND).



**4 SEND is everyone's business**

**4 All teachers are teachers of all children/young people**

**4 The right support in the right place at the right time**

Go to [www.somersetchoices.org.uk](http://www.somersetchoices.org.uk) and search for 'Core Standards' or 'What to expect from education'

